



insite

ISSUE
49

November 2019

#DecadeOfDrilling
RGS Building on
10 years of growth

REGULAR NEWS AND VIEWS FROM **ROGERS GEOTECHNICAL SERVICES**

> PROTECTING YOUR INVESTMENT.



Buying land?

Reach for the stars

Head to Toe

Spotlight: The Fieldworks Team

Did you know?

Dash for cash

Welcome to RGS insite issue 49

Our regular newsletter celebrates more than a decade of drilling and keeps you up to date with RGS and industry news.

Rogers Geotechnical Services Ltd are **site investigation specialists** offering ground investigation and geotechnical services to developers, builders, structural and consulting engineers, architects, insurance companies, local authorities, piling and foundation engineers, private individuals and other geotechnical consultants.

UNDER THE SPOTLIGHT THE FIELDWORKS TEAM

Environmental
Geotechnical
Specialists



Last month, our busy Engineering Team were under the insite spotlight.

This time, we're focusing on those hardy folks who **brave all weathers** to carry out **vital site investigations** that prepare the way for a **safe, rock-solid and profitable** build.



Click here to meet the [Fieldworks Team!](#)



INSITE
ISSUE
49



HEALTH & SAFETY

Head to Toe: Mind your step!



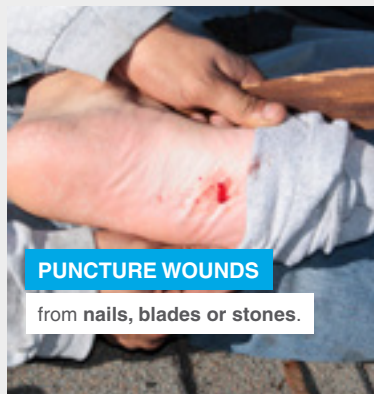
DON'T PUT
A FOOT WRONG.

WEAR YOUR
SAFETY BOOTS!

It's easy to undervalue [the importance of our feet](#). We probably give them very little attention... For most of us, they're just there, whenever we need them.

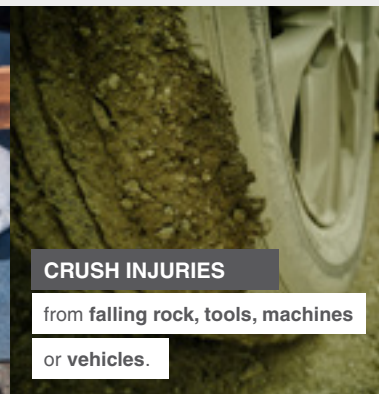
But **foot injuries are extremely common**, often causing pain and **great disruption to daily lives**. After all, everyone knows that walking for a few minutes with even the smallest stone in your shoe is mighty uncomfortable!

On a construction site, **the risks are ramped up** many times over. Without protective footwear, the **26 DELICATE BONES, 33 JOINTS** and more than **100 LIGAMENTS, MUSCLES** and **TENDONS** in each of your feet are exposed daily to all kinds of potentially life-changing hazards such as:



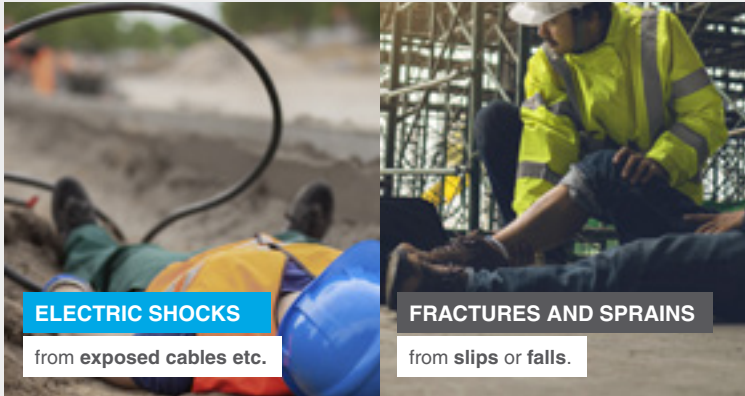
PUNCTURE WOUNDS

from nails, blades or stones.



CRUSH INJURIES

from falling rock, tools, machines
or vehicles.



The impact of injury or amputation can of course be huge, with weeks or months out of action and possibly the loss of your job.



Fortunately, it's easy to prevent nearly all of these injuries.

Wearing appropriate footwear such as **anti-slip steel toecap boots** helps protect your feet from pain and damage. The right boots make your working day **more comfortable too**: if they don't, check with your employer to make sure your footwear fits properly and that any padding is in the right place.

Steel toecap boots may not always be the right choice.

For example, **liquid concrete burns your skin** and (depending on the job you're doing) **wellington boots** may be the best way of preventing contact between your feet and this corrosive fluid.

If you work onsite, your employer **must provide you with suitable protective footwear...**

IT'S YOUR RESPONSIBILITY TO KEEP IT IN GOOD CONDITION.



**DON'T PUT A FOOT WRONG
WEAR YOUR SAFETY BOOTS!**



RGS INFO SHEETS

Buying land?



If you're considering buying land, there are lots of **important points** to consider!

Thinking ahead will help you make an **informed purchase** and avoid the massive costs of a **bad investment** or an **unsafe build**.

We've put together a handy list of top tips for anyone tempted to buy a slice of the homeland for themselves!

[Click here](#) to find out more.



TRAINING & CPD

Did you know?



Did you know RGS delivers **top quality CPD sessions** and training courses to **upskill or update your people and teams?**

We also offer lunchtime CPD sessions and seminars as well as half and full-day sessions **at RGS HQ or at your own premises.**

Covering a wide range of **ground investigation-related themes**, we can design our training to match your needs.

Whatever the course, both your people and your business will reap the benefits of engaging, interactive and compelling learning with RGS.

- // SITE INVESTIGATION
- // **CONTAMINATION STUDIES**
- // SLOPE STABILITY ANALYSIS
- // **SOILS ANALYSIS**
- // SOAKAWAY DESIGN AND TESTING
- // **WORKING PLATFORM DESIGN**
- // ENVIRONMENTAL ENGINEERING
- // **FOUNDATION SOLUTIONS**
- // BUILDING OVER DIFFICULT GROUND



LET US HELP YOU ACHIEVE YOUR GOALS
EMAIL US NOW OR CALL 01484 604 354 TO TALK IT THROUGH.

Environmental Geotechnical Specialists





STAFF DEVELOPMENT

Reach for **the stars**



Huge congratulations to our Engineering Support Technician, **Katie Wallett**, who's just been awarded a Distinction in her latest module.

Katie is studying for her **Open University BA degree in Business Management** and she's clearly doing this with great success. Katie began her RGS career as an apprentice, but **within six months she was shining so brightly** that we seconded her onto a degree course. **We're proud of you, Katie!**

WORKING WITH THE COMMUNITY

Dash for **cash**



Hats off to the stalwart runners from Bryan G Hall on **raising £1,100** for the Teenage Cancer Trust!

Ten of the well-known engineering firm's team took to the streets of Leeds on **October 27th** to run the **10k Abbey Dash** in aid of this important young people's charity. RGS was pleased to donate but prouder by far to **celebrate your excellent effort. Well done all!**



Do you need a phase one environmental desk study report?

RGS STANDARD RGS PREMIUM

Contact us for more details and to discuss your options for this service

For more information about your investigation requirements please don't hesitate to contact us.

Telephone on 01484 604 354

Click here to email us

CLIENT FEEDBACK

Talk to us

“ We're always keen to hear what clients think of our service and welcome feedback from within the industry. ”
We'd love to hear from you.

Click here to email us your comments

